

# Mass storage medium replacement

© SIEMENS AG 2002. All Rights Reserved.



PTD PA13  
 Power Transmission and Distribution  
 Power Automation  
 Power Quality

This manual, copy right, its reproduction, copying,  
 it to others and the use or communication of the contents  
 without the written consent of the company,  
 are forbidden. The company is not liable for any damages,  
 All rights are reserved. In the event of the grant of a  
 patent, the registration of a utility model or design.

## Manual

# Replacement of SIMEAS R hard disk with a new prepared storage medium

| author         | department | phone            | version | date       |
|----------------|------------|------------------|---------|------------|
| Mr. Unterweger | PTD PA13   | +49 911/433 7176 | V1.03   | 01.07.2002 |
| Dr. Sezi       | PTD PA 13  | +49 911 433 8291 | V1.04   | 08.07.2002 |
|                |            |                  |         |            |
|                |            |                  |         |            |

**Table of contents**

|  |          |
|--|----------|
| <b>INTRODUCTION.....</b>   | <b>3</b> |
| 1.1 IMPORTANT INFORMATION .....  | 3        |
| 1.2 OSCOP P UPDATE.....  | 3        |
| <b>2 HOW TO REPLACE THE HARD DISK WITH A PREPARED (PARAMETERIZED) MASS STORAGE MEDIUM.....</b> | <b>4</b> |
| 2.1 REQUIREMENTS.....  | 4        |
| 2.2 PROCEEDING.....  | 4        |
| 2.2.1 <i>Hard disk exchange</i> .....  | 4        |
| 2.2.2 <i>Update SIMEAS R Device parameter in OSCOP P database</i> .....                        | 4        |
| 2.2.3 <i>Setting of the SIMEAS R password</i> .....  | 6        |

## 1 Introduction

This document describes the procedure how to replace a mass storage medium containing the firmware as well as the SIMEAS R device parameters.

**Note:** By replacing the SIMEAS R mass storage medium all data (fault records, mean values, messages etc.) saved on the SIMEAS R hard disk get lost. Therefore we recommend that you save all data via your Evaluation PC.

### 1.1 Important information

After you have replaced the original hard disk using our manual, please perform the following steps:

- a) Read the factory number of SIMEAS R (see front cover of SIMEAS R, e.g. AA-K1-600100 or TDD-N9-602234). Note with a pen the factory number as well as the serial number of the original (old) hard disk (e.g. F1044454) on the packing of the new mass storage medium.
- b) Please pack the original (old) hard disk into the packing of the old hard disk and send it to the following address.

**SIEMENS AG**

**PTD PA PTL3**

**z.Hd. Herrn Thomas Schwertle**

**Wernerwerkdamm 5**

**13629 Berlin**

**GERMANY**

Please make sure, that you send the old hard disk in exchange for the new mass storage medium back to our factory. For each hard disk, we don't receive within 3 month we need to charge you with 400€

In case of troubles please contact our hotline:

Tel: +49 180 524 7000

Fax: +49 180 524 2471

e-mail: [services@ptd.siemens.de](mailto:services@ptd.siemens.de)

Further information for SIMEAS R FW upgrade procedure is available at our internet download area: [http://www.powerquality.de/pq\\_da/index\\_e.htm](http://www.powerquality.de/pq_da/index_e.htm)

### 1.2 OSCOP P Update

The new mass storage medium will be delivered with the firmware version 2.1.16 or higher and a software-CD containing the current OSCOP P version 6.1L or higher. Please make sure that you are using only this combination together and make an update if required. If you are using a DAKON in combination with a SIMEAS R please make sure that this DAKON is also running with OSCOP P version 6.1L or higher.

## 2 How to replace the hard disk with a prepared (parameterized) mass storage medium

### 2.1 Requirements

- 1) A mass storage medium with the current SIMEAS R Firmware Version 2.1.16 or higher and the specific SIMEAS R device parameters.
- 2) SIMEAS R mass storage installation instruction

### 2.2 Proceeding

#### 2.2.1 Hard disk exchange

**Warning: Be careful when handling the mass storage medium. Do not drop it and avoid any shock to the mass storage medium.**

In order to replace the current (old) mass storage medium with the new prepared mass storage medium, please proceed as follows:

**Note: Please compare the SIMEAS R factory number (shown at the front cover) with the number written on the storage medium. These numbers must match; the device can only work properly with the right assigned mass storage medium which was prepared in the factory with the parameters you sent!**

1. **Switch off SIMEAS R.**
2. For safety reasons please pinch off the voltage supply.
3. Take the hard disk out of the PCMCIA Slot of SIMEAS R. Please see the instruction: SIMEAS R mass storage installation.
4. Insert the mass storage medium in the left slot and close the cover.
5. Plug in the voltage supply.
6. Switch on the device. During the start-up all LED's on the front panel are on. The start-up procedure will take about 2 minutes. At the end of the start-up procedure, all LED's will be off except for the "SIMEAS R ready" LED.

#### 2.2.2 Update SIMEAS R Device parameter in OSCOP P database

Transfer and save the current device parameters of SIMEAS R on PC using the OSCOP P Software:

- a.) Start OSCOP P module „**Parametrize device**”.
- b.) Select the menu "Device" – "Parameterize". Select the required device and confirm with "Ok".
- c.) Transfer and receive the specific device parameters from the SIMEAS R by selecting the menu „**Parameter**" - „**Load from device**".

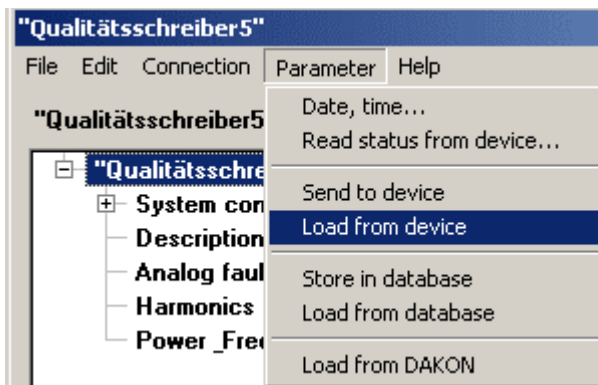


Figure 1: Load parameters from device

- d.) Later, select the menu „Parameter“ - „Send to device“ and send the specific device parameters to the SIMEAS R again to make sure that SIMEAS R has the same device name as defined in OSCOP P.

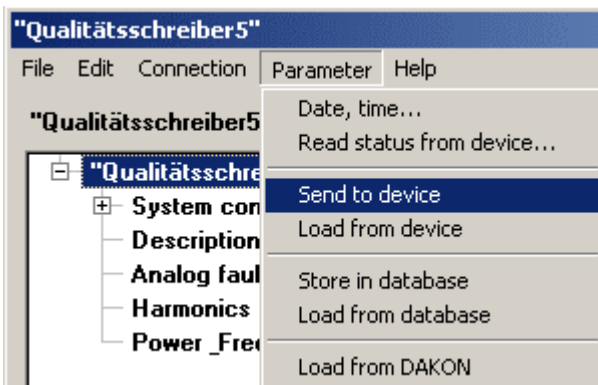


Figure 2: Send parameters to device

**Note:** If you get the error message “password is not correct” even though the device is ready for operation, the setting of the SIMEAS R device password is necessary. In that case please proceed with chapter 2.2.2.

- e.) After successfully sending the parameters to the device, please select the menu “Parameter” – “Store in Database” to save the current device parameters in the OSCOP P database.

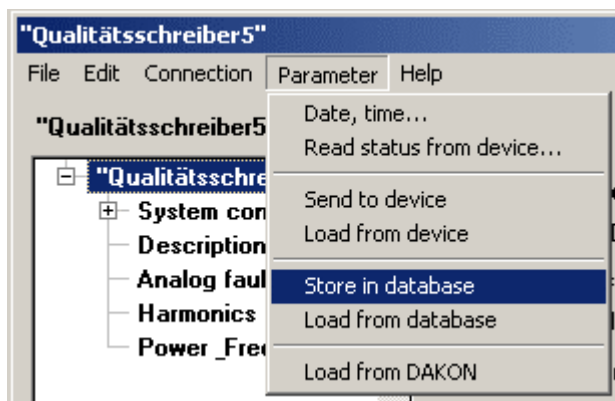


Figure 3: Store parameters in database

Самостоятельное копирование, использование, изменение или передача в третьи лица без письменного разрешения Siemens AG являются незаконными. Любая попытка нарушения этих правил будет преследоваться по закону. Все права защищены. © 2013 Siemens AG, Германия.

- f.) Select the menu **"Parameter" – "Date, time..."** and send the current PC-time to the device. (In case you are using synchronized devices you can skip this point)

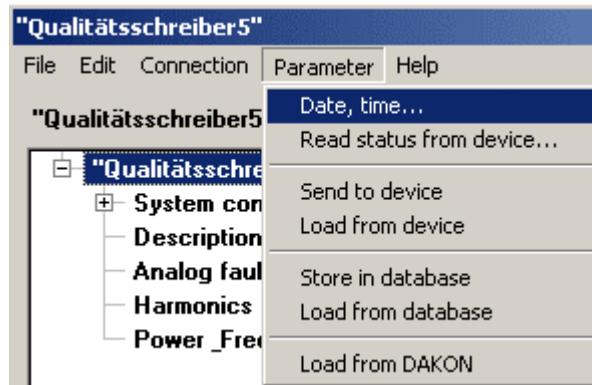


Figure 4: Send date and time

### 2.2.3 Setting of the SIMEAS R password

If you are not using the original device password "kennwort" in your SIMEAS R, you need to send the password to the device again. The SIMEAS R does not make any password request during the first 2 minutes after a restart. Therefore the SIMEAS R needs to be switched on and off before you execute point 2.2.2. Please proceed as follows:

1. Start OSCOP P module **„Parametrize PC“**.
2. Select the menu **"Configuration" – "Device"** and select the required device.
3. Press the button **"Change"**
4. Press the button **"Additional..."**
5. Fill in the new SIMEAS R password.
6. Press button **"Send password..."**, fill in the password again do not press **"Ok"** directly!
7. Restart the device. As soon as the device is ready for operation press the **"ok"** button.
8. Close all dialogs.